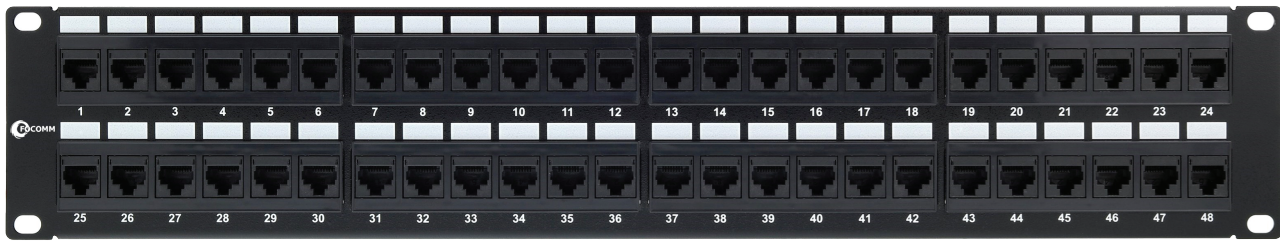


LAN SYSTEM PRODUCTS

19" 1U UTP Patch Panel CAT5E, 48 Ports, Krone&110 Dual IDC, With back bar



OVERVIEW

The patch panel is a 19 inch rack mountable RJ45 jack panels, Each panel has cutouts that accept virtually all snap-in jacks, the kits includes the new icon labels with plastic holders that you mount on the front of the panel for easy port identification .Blank anodized panels can be mounted directly to an EIA standard 19 inch relay back or cabinets.

FEATURE

- Design to mount to any standard 19" rack or cabinet 48 port Cat5E Patch panel.
- Space saving, high-density 2U.
- Black Electrostatic Powder-Coated Steel: phosphor bronze with tin plating over nickel. Meet or exceed the requirement of ANSI /TIA/EIA 568B.2
- Use keystone jacks and keystone inserts to configure your panel to accommodate a variety of schemes
- Sturdy Aluminum Plate around RJ 45 Jacks
- Phosphor bronze with 6-50 micro inches gold plated.
- Available with T568 A .T568 B wiring pattern and meeting the requirement of Cat5E standard.
- Color Coded TIA/EIA 568A (international) and 568B (AT&T Standard)
- Wiring For Easy Installation
- Termination accepts 22,24 26 AWG (0.64 ,0.5 and 0.4) solid wires
- Metal sheet: Corrosion resistant steel
- Plastic : fire self-extinguish high impact plastic

ORDER INFORMATION

PRODUCT	PART NUMBER
19" 1U UTP Patch Panel CAT5E, 48 Ports, Krone&110 Dual IDC, With back bar	L-PP-U5-48