

# VDO WALL CONTROLLER

4K Video Wall Controller, 2x2



## OVERVIEW

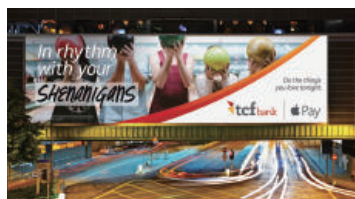
This 4K 2x2 video wall controller, support HDMI or DVI input and 4 HDMI output, the main function is to divide a complete HDMI, DVI HD image signal into 4 blocks and assign to 4 video display units (such as rear projection unit, LCD TV, etc.). Complete with 4 HDMI HD video display units to form a large dynamic image wall.



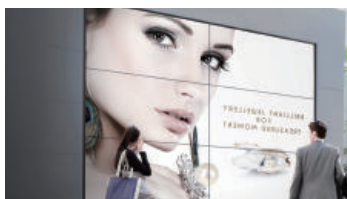
## FEATURE

- Support HDMI and DVI input;
- Support 4 HDMI outputs;
- Output support RGB 4:4:4;
- Support RS232 control;
- Support 2X2/1X2/2X1 splicing, easy operation, plug and play;
- Support 2X2 automatic splicing function;
- Support the highest input 4K/30Hz, the highest output of four each 1080P/60Hz;

## APPLICATIONS



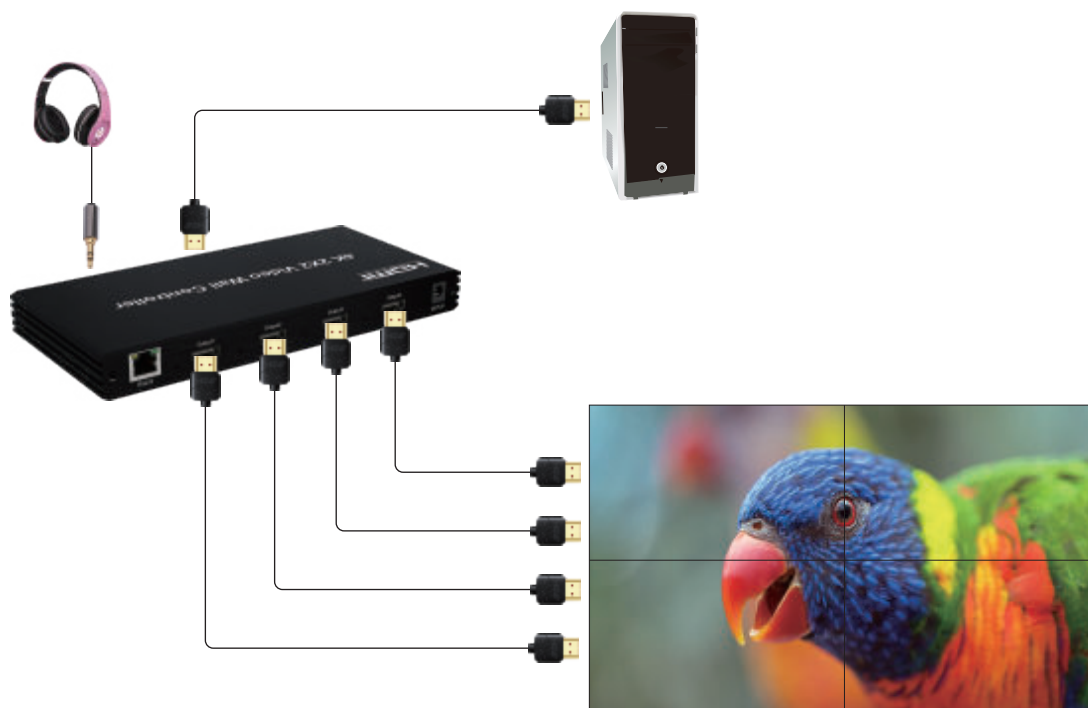
Outdoor video wall



Shopping mall video wall



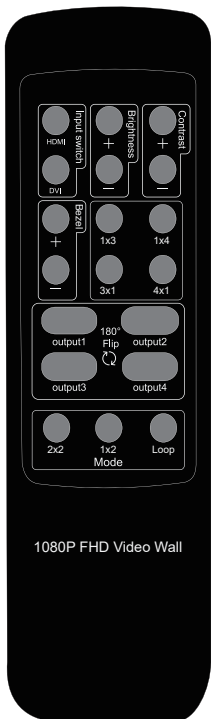
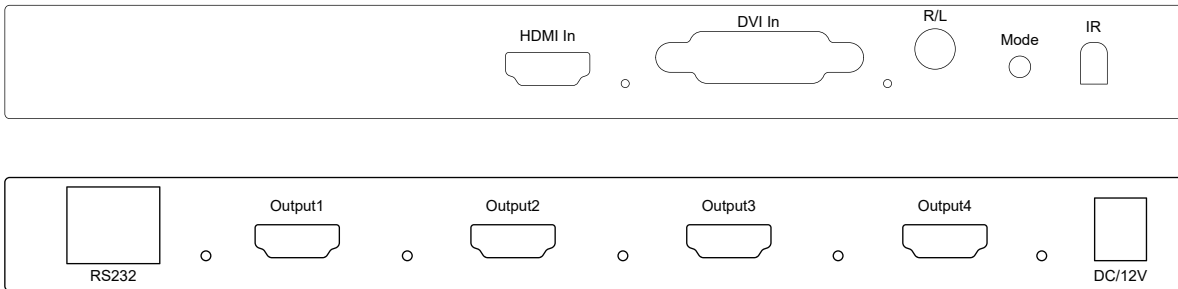
Monitor room



## SPECIFICATIONS

HDMI resolution	the highest support 4K/30Hz
Support audio format	stereo
Input cable length	≤10M AWG26 HDMI standard cable
Output cable length	≤10M,AWG26 HDMI standard cable
Max working current	300mA
Power adapter specifications	input AC (50HZ, 60HZ) 100V-240V Output 12V DC/1A
Operating temperature range	(-10°C ~ +45°C )
Dimension (L x W x H)	226x108x24(mm)
Weight	517g

## OPERATING AND CONNECTING



: Input switching selection

: Brightness adjustment

: Contrast adjustment

: Bezel adjustment

: Mode selection  
1x3 mode/1x4 mode  
3x1 mode/4x1 mode

: Output 180°Flip

: Mode selection  
2x2 mode/1x2 mode/Loop switching mode

## ORDER INFORMATION

PRODUCT	PART NUMBER
4K Video Wall Controller, 2x2	MD-4KHDVW-0202