

# HDMI MATRIX

4K 60Hz HDMI Matrix 0602



## OVERVIEW

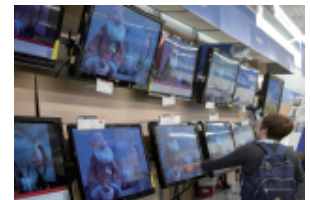
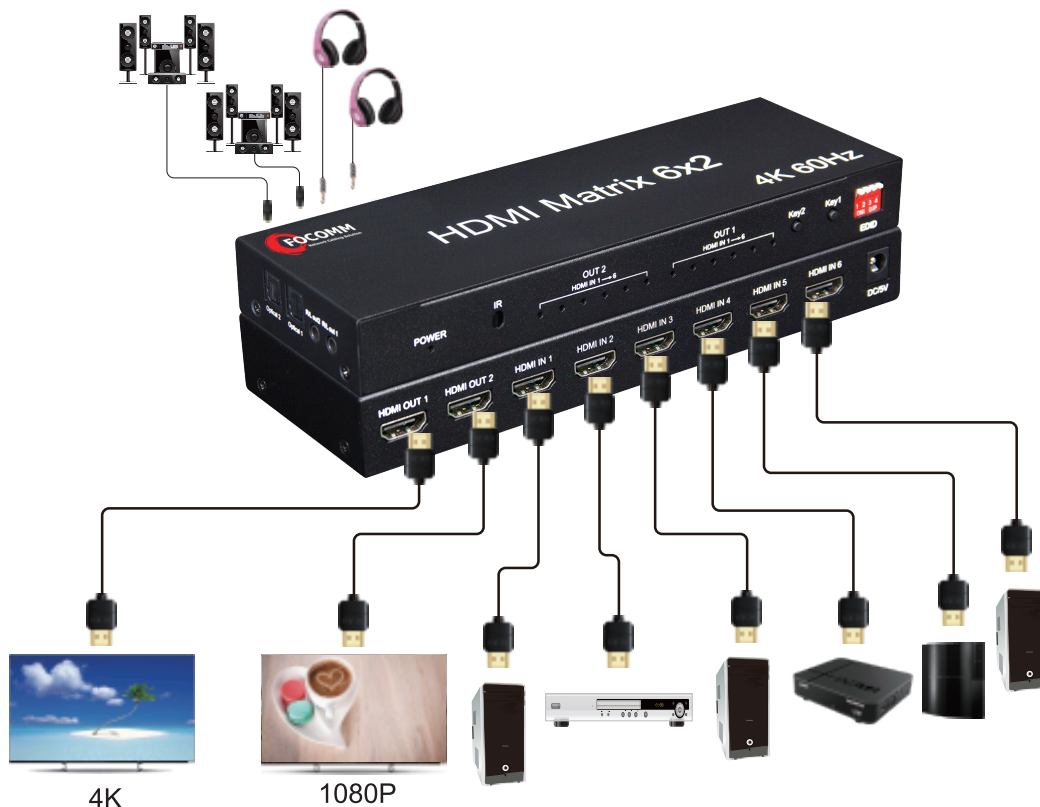
The HDMI 4K 60Hz matrix 6x2 can connect 6 HD signal sources to 2 HD display terminals with optical fiber or stereo headphone output. The matrix allows six HDMI devices to be switched or split easily to two HDMI compatible monitors or projectors. And any output ports can realize independent audio output by optical fiber or stereo head phone. Our devices offer solutions for noise, space and security concerns, data center control, information distribution, conference room presentation, school and corporate training environments.



## FEATURE

- Support 3D video format
- Support for 4K (input) resolution 2K (output) (Down scaler)
- Support 2 HDMI audio outputs, 3.5mm earphone jack and optical output at same time
- 6 HDMI inputs switch and split to 2 HDMI displays.
- Support LPCM/Dolby/DTS 5.1 channel.

## APPLICATIONS



TV Store



Teaching room



Video Conference

FOCOMM (THAILAND) CO., LTD

12 Soi Sukhaphiban 5 Soi 5 Yaek 3, Tha Raeng Subdistrict, Bang Khen District Bangkok 10220

Email : [info@focomm-cabling.com](mailto:info@focomm-cabling.com) [www.focomm-cabling.com](http://www.focomm-cabling.com)



## SPECIFICATIONS

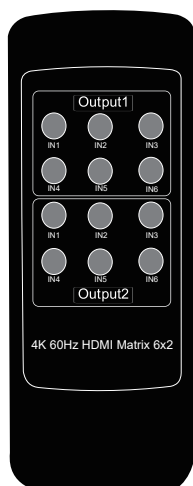
HDMI resolution	up to 3840*2160/60Hz
Support video format	.8/10/12 bit deep color
Support audio format	LPCM/DTS/Dolby-AC3
Max bandwidth	600MHz
Max baud rate	3x6Gbps
Input cable distance	4K/30Hz s15M AWG26 HDMI standard cable 4K/60Hz s5M HDMI 2.0 standard cable
Output cable distance	4K/30Hz <15M AWG26 HDMI standard cable 4K/60Hz s5M HDMI 2.0 standard cable
Max working current	1A
Power adapter format	Input: AC (50HZ, 60HZ) 100V-240V; Output: DC5V/1.5A
Operating Temperature range	(-15°C to +45°C)
Operating Humidity range	5 to 90%RH (No Condensation)
Dimension (L x W x H)	200x70x25 (mm)
Weight	305g

## CONNECTING AND OPERATING

1. Connect each HDMI source devices and input of HDMI Matrix with HDMI cable.
2. Connect display devices and output of HDMI Matrix with HDMI cable.
3. Connect audio output and stereo amplifier with stereo headphone or fiber.
4. Connect 5V power supply to the HDMI 6x2 Matrix.
5. Use the IR remote or button control to switch the signal source freely.

NOTE: HDMI port and audio ports are connected according to user needs, not every be connected; but not reversed.

## CONNECTING AND OPERATING



- 1) The 6 buttons on Output 1 is the corresponding input source IN1-IN6 which out from Output 1, IN1-IN6 can be switched freely.
- 2) The 6 buttons on Output 2 is the corresponding input source IN1-IN6 which out from Output 2, IN1-IN6 can be switched freely.

### Instruction of Buttons and LED:

1. Instruction of LED: IN1-IN6 indicator is the corresponding input sources out from Output 1 or Output 2.
2. Operation of Buttons: Key 1 or Key 2 is used to switched the corresponding input source out from Output 1 or Output 2.

## ORDER INFOMATION

PRODUCT	PART NUMBER
4K 60Hz HDMI Matrix 0602	MD-4KHDM-0602