

# FIBER OPTIC SWITCH PRODUCTS

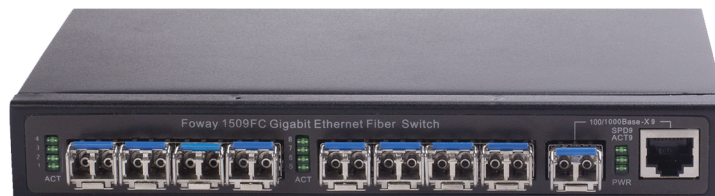
Fiber Optic Switch 08x1G L2 Managed Fiber Switch



## OVERVIEW

SW-FGM-08SFP is a nine ports Gigabit fiber switch, with 8 1000M SFP fiber ports and 1 1000M Combo port (100M / 1000M SFP port or 10/100/1000M RJ45 port optional) uplink.

SW-FGM-08SFP supports SFP modules hot plug, and supports to work with other fiber switches, fiber converters and other devices with fiber ports. support WEB management and SNMP management (optional); support to transmit HD video flow;streamlined network structure(equal to 8 units fiber media converter and an Ethernet switch ), apply to security system, electronic power system and traffic system requirements.



## FEATURE

- Support 8 Gigabit SFP access and 1 Gigabit Combo port (100M or 1000M SFP optional, or 10/100/1000M RJ45 port)
- Support SFP hot plug
- Support full rate, full-duplex non-blocking forwarding at each port
- Support WEB ,and SNMP management (optional):VLAN,STP/RSTP,Trunk port aggregation, IGMP,port Mirroring,port isolation,broadcast control,loop detection,QinQ, etc
- Support DHCP, PPPoE, ACL, LLDP
- Support 8K MAC learning, 1Mbit storage and forward cache space, 22G back plane bandwidth,10K Byte large frame forwarding
- Supports to substitute central fiber converter, simplify network structure, lower network establishing cost, reduce device fault
- All optic ports, strengthen the an-interference ability
- Metal casing design, better for heat dissipation

## SPECIFICATIONS

Parameter	Specification
Port	8 Gigabit SFP fiber ports: 1000Mbps 1 Gigabit Combo port:: 1 Gbps, 100M/1000M SFP&10/100/1000M RJ45
MAC	8K
Buffer memory space	1Mbit
Bit error rate	<1/1000000000
MTBF	100000 hours
Power	DC12V/AC220V
Power consumption	10W
Working temperature	-10~60°C
Storage temperature	-40~80°C
Humidity	5%~90% non-condensing
Dimension	28mm (H)×193mm(W)×119mm (D)

FOCOMM (THAILAND) CO., LTD

12 Soi Sukhaphiban 5 Soi 5 Yaek 3, Tha Raeng Subdistrict,Bang Khen District Bangkok 10220

Email : [info@focomm-cabling.com](mailto:info@focomm-cabling.com) [www.focomm-cabling.com](http://www.focomm-cabling.com)



## SPECIFICATIONS

Parameter	Specification
Standard	IEEE802.3 10Base-T Ethernet,IEEE802.3u 100Base-TX/FX Fast Ethernet, IEEE802.3ab 1000Base-T, IEEE802.3z 1000Base-SX/LX Gigabit Ethernet, IEEE802.1d Spanning Tree Protocol,IEEE802.1w Rapid STP,IEEE802.1s Multiples STP,IEEE802.1q Vlan,IEEE802.1q Qos,IEEE802.3ad Trunk,IEEE802.3X Flow Control
Wavelength	SFP:850nm/1310nm/1490nm/1550nm
Distance	100M SFP Multi-mode: 2km (fiber size 62.5/125μm or 50/125μm) Single-mode: 20/40/60/80/100/120Km Single-fiber single-mode: 25/40/60/80/100/120Km 1000M SFP Multi-mode: 220m (fiber size 62.5/125μm) / 550m(fiber size 50/125μm) Single-mode: 10/20/40/60/80/100/120Km Single-fiber single-mode:10/20/40/60/80/100/120Km CAT5: 100m

## ORDER INFOMATION

PRODUCT	PART NUMBER
Fiber Optic Switch 08x1G L2 Managed Fiber Switch	SW-FGM-08SFP